

NOTE:

1. Makila Land Company reserves all rights to make such changes as are necessary in its sole judgement.
2. Lot dimensions shown on plan obtained from the County Use Only Makila Ridge Subdivision Final Plat Map and are subject to changes pending recordation of final plan map.
3. Elevation contours and utility stubout connections depicted on this exhibit are illustrative in nature and should not be relied upon unless confirmed by a topographic survey.

PLOT PLAN for Lot 1 MAKILA RIDGE SUBDIVISION

LEGEND:

- | | | | |
|--|--|--|--|
| | Drainage Culverts | | Property Line |
| | 100.00 Lot Dimension | | Existing Grade Contour |
| | Water and Electric Service Connection Points | | Easement Line |
| | Fire Hydrant | | Flow Arrows |
| | | | Indicates Designated Cultural Buffer Zones |

File Plan Lot No.: 1

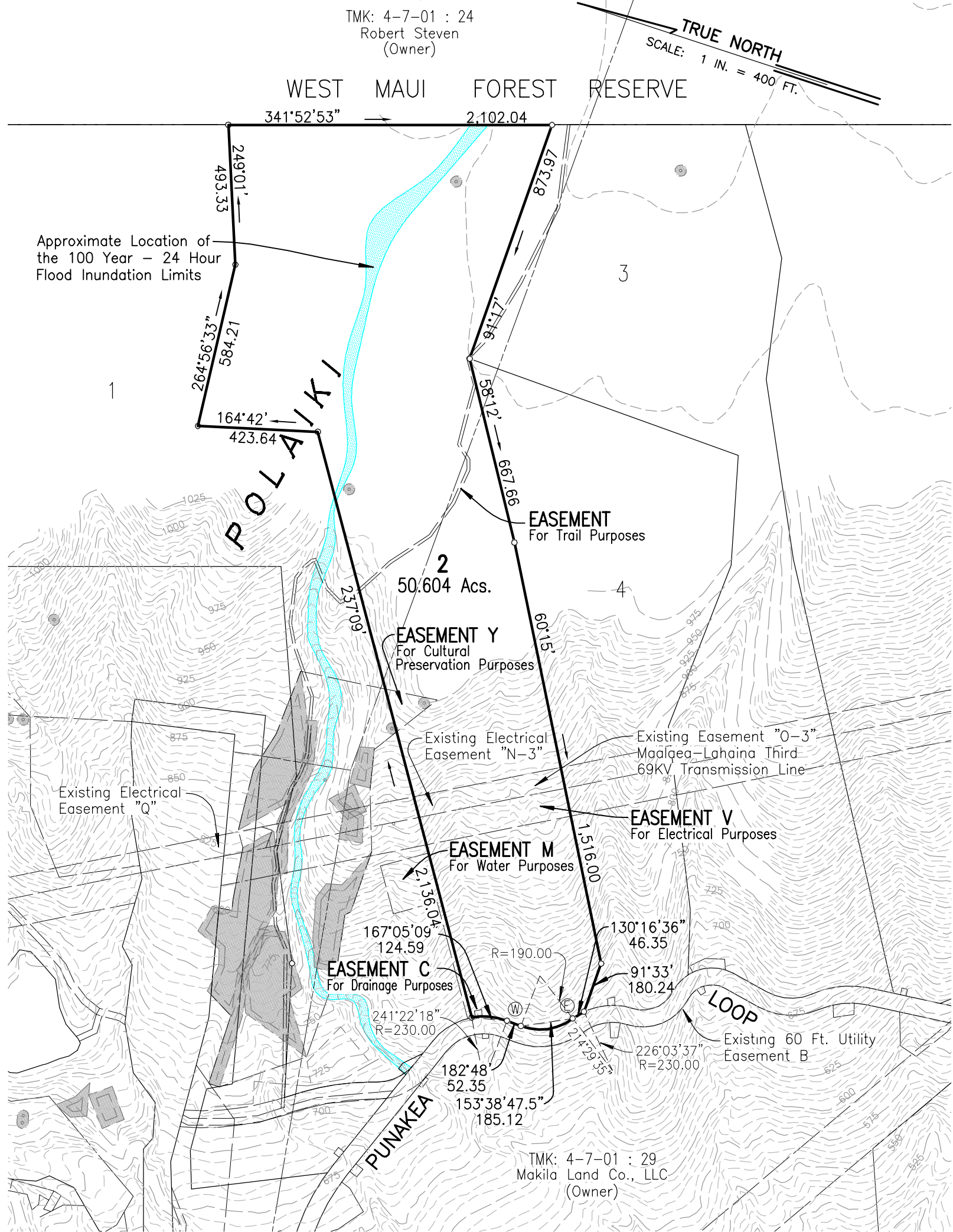
Tax Map Key:

Street Address and Name:

Lot Size (Acs.): 91.491 ACS.

Date: February 10, 2009

Additional Notes:



NOTE:

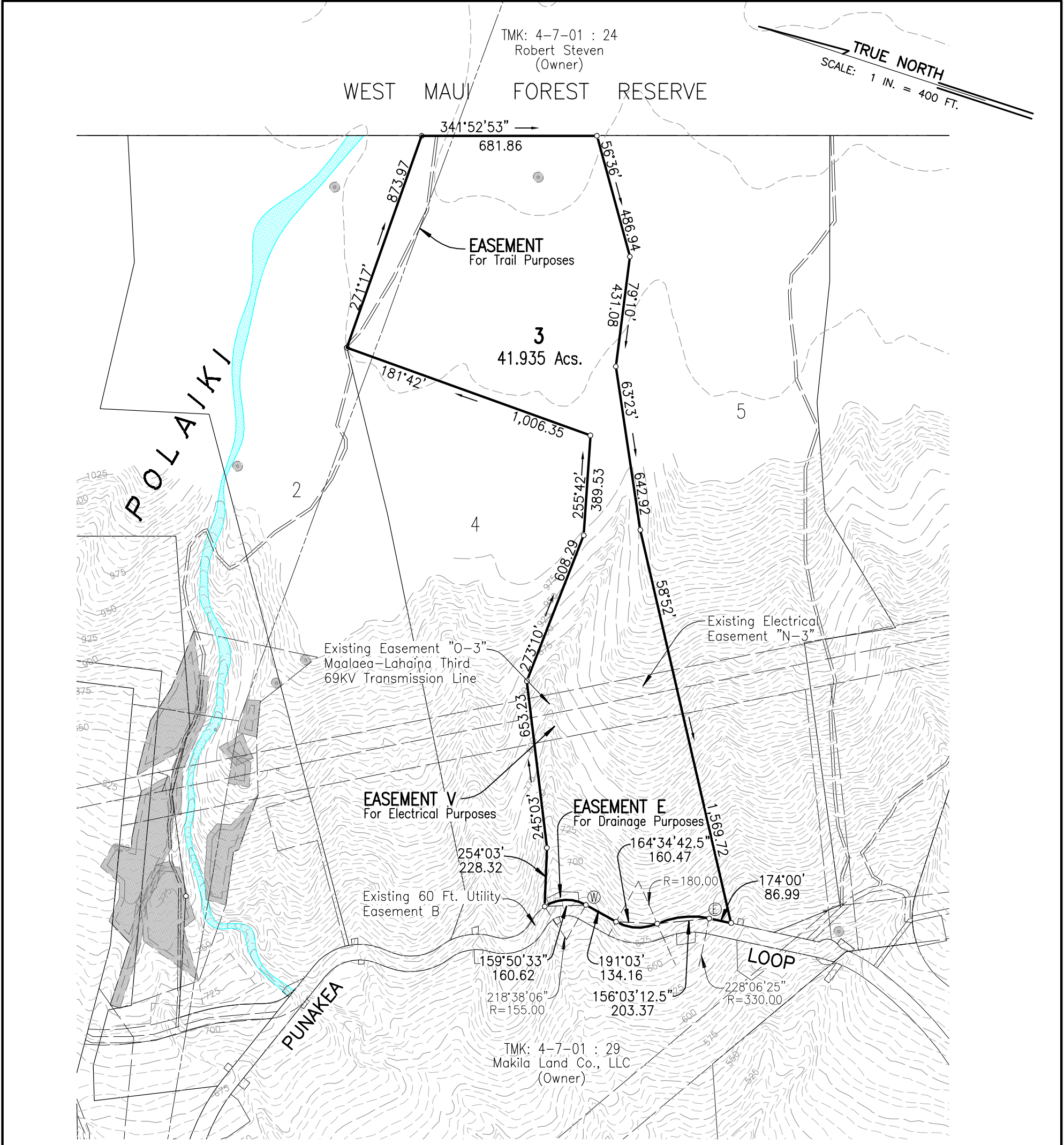
1. Makila Land Company reserves all rights to make such changes as are necessary in its sole judgement.
2. Lot dimensions shown on plan obtained from the County Use Only Makila Ridge Subdivision Final Plat Map and are subject to changes pending recordation of final plan map.
3. Elevation contours and utility stubout connections depicted on this exhibit are illustrative in nature and should not be relied upon unless confirmed by a topographic survey.

PLOT PLAN for Lot 2 MAKILA RIDGE SUBDIVISION

LEGEND:

- | | |
|--|--|
| Drainage Culverts | Property Line |
| Lot Dimension | Existing Grade Contour |
| Water and Electric Service Connection Points | Easement Line |
| Fire Hydrant | Flow Arrows |
| | Indicates Designated Cultural Buffer Zones |

File Plan Lot No.: 2
 Tax Map Key:
 Street Address and Name:
 Lot Size (Ac.): 50.604 ACS.
 Date: February 10, 2009
 Additional Notes:



NOTE:

1. Makila Land Company reserves all rights to make such changes as are necessary in its sole judgement.
2. Lot dimensions shown on plan obtained from the County Use Only Makila Ridge Subdivision Final Plat Map and are subject to changes pending recordation of final plan map.
3. Elevation contours and utility stubout connections depicted on this exhibit are illustrative in nature and should not be relied upon unless confirmed by a topographic survey.

PLOT PLAN for Lot 3 MAKILA RIDGE SUBDIVISION

LEGEND:

- | | | | |
|--|--|--|--|
| | Drainage Culverts | | Property Line |
| | 100.00 Lot Dimension | | Existing Grade Contour |
| | Water and Electric Service Connection Points | | Easement Line |
| | Fire Hydrant | | Flow Arrows |
| | | | Indicates Designated Cultural Buffer Zones |

File Plan Lot No.: 3

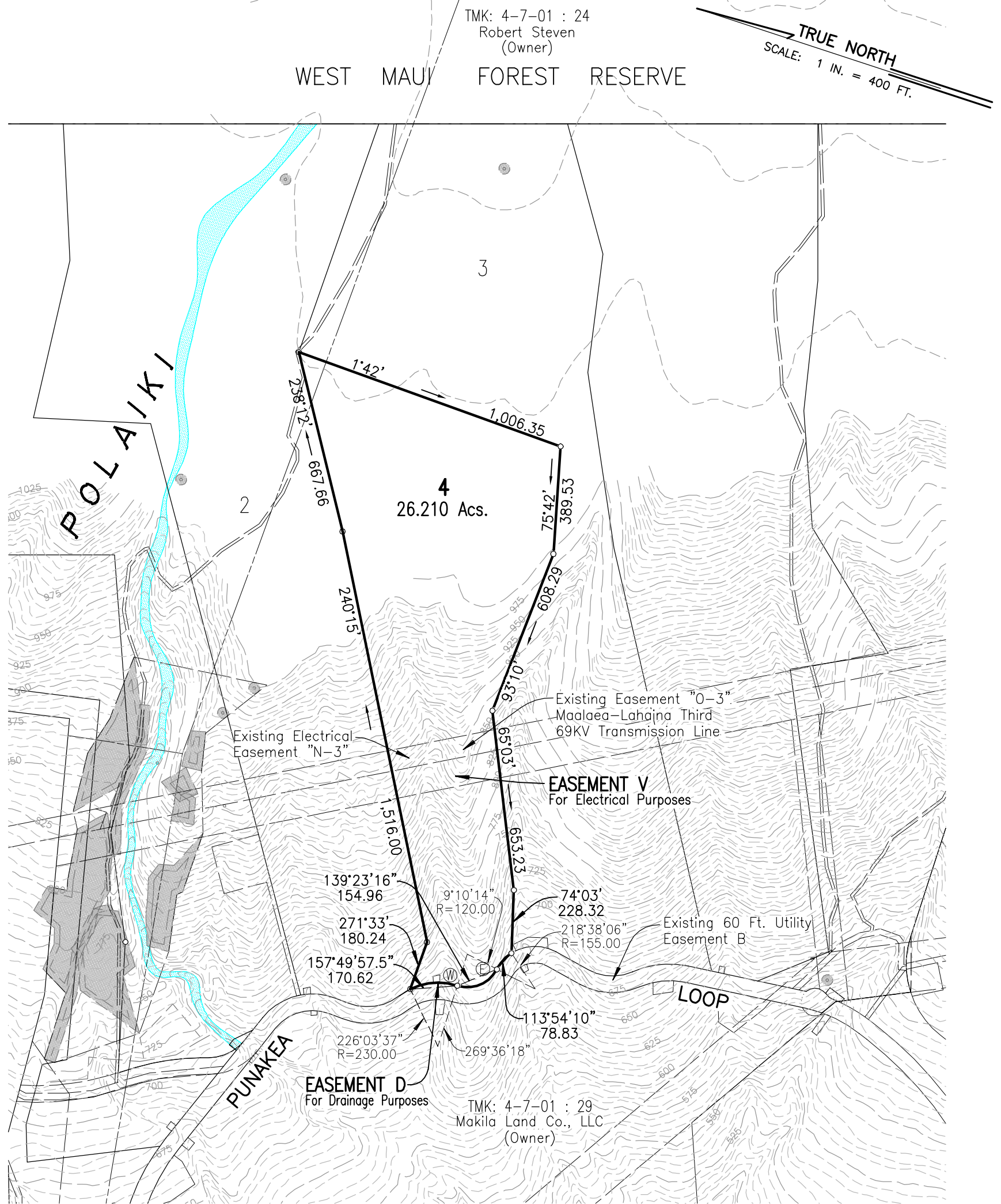
Tax Map Key:

Street Address and Name:

Lot Size (Acs.): 41.935 ACS.

Date: February 10, 2009

Additional Notes:



NOTE:

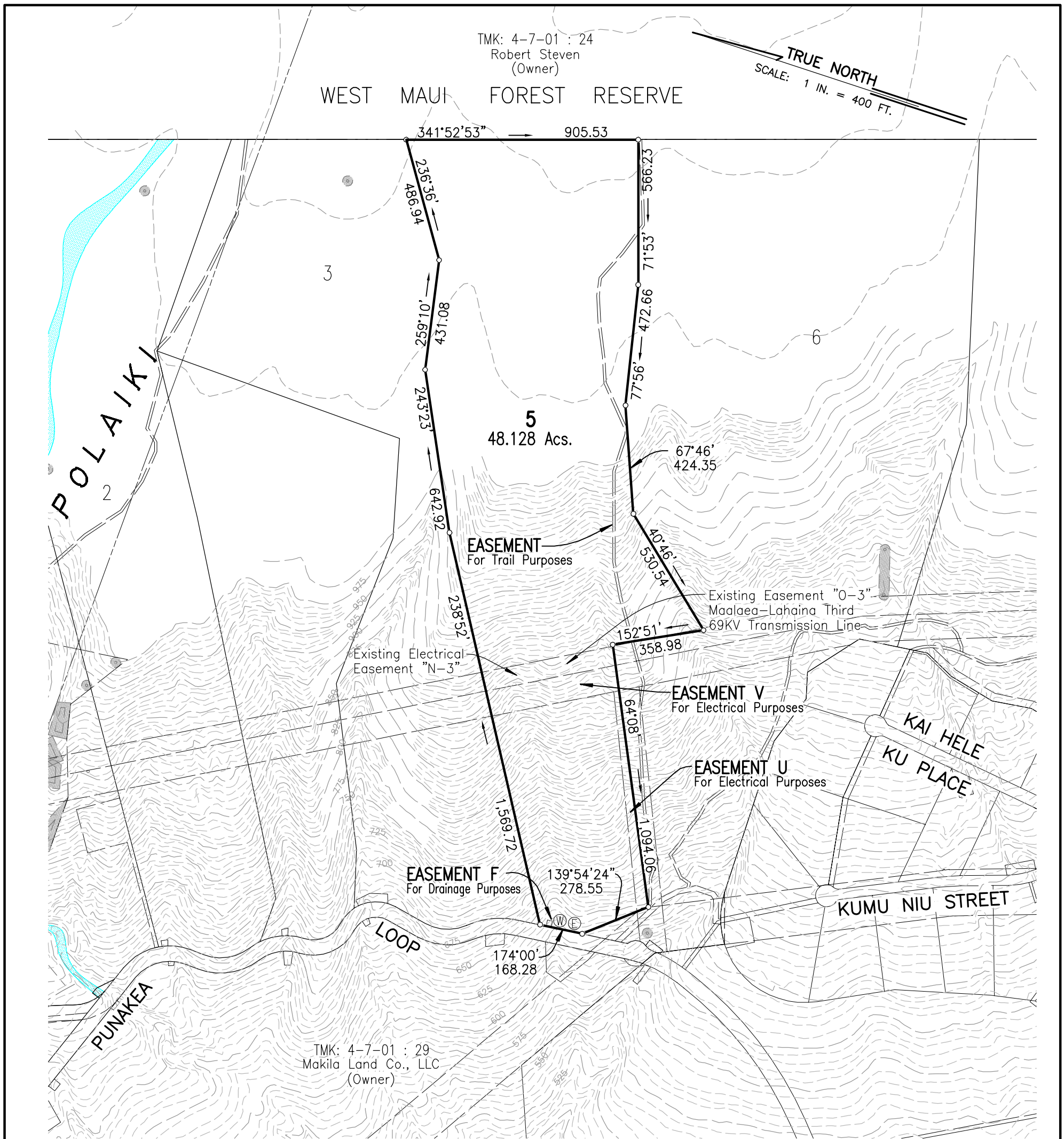
1. Makila Land Company reserves all rights to make such changes as are necessary in its sole judgement.
2. Lot dimensions shown on plan obtained from the County Use Only Makila Ridge Subdivision Final Plat Map and are subject to changes pending recordation of final plan map.
3. Elevation contours and utility stubout connections depicted on this exhibit are illustrative in nature and should not be relied upon unless confirmed by a topographic survey.

PLOT PLAN for Lot 4 MAKILA RIDGE SUBDIVISION

LEGEND:

	Drainage Culverts		Property Line
	100.00 Lot Dimension		Existing Grade Contour
	Water and Electric Service Connection Points		Easement Line
	Fire Hydrant		Flow Arrows
			Indicates Designated Cultural Buffer Zones

File Plan Lot No.: 4
Tax Map Key:
Street Address and Name:
Lot Size (Acs.): 26.210 ACS.
Date: February 10, 2009
Additional Notes:



NOTE:

1. Makila Land Company reserves all rights to make such changes as are necessary in its sole judgement.
2. Lot dimensions shown on plan obtained from the County Use Only Makila Ridge Subdivision Final Plat Map and are subject to changes pending recordation of final plan map.
3. Elevation contours and utility stubout connections depicted on this exhibit are illustrative in nature and should not be relied upon unless confirmed by a topographic survey.

PLOT PLAN for Lot 5 MAKILA RIDGE SUBDIVISION

LEGEND:

- | | | | |
|--|--|--|--|
| | Drainage Culverts | | Property Line |
| | 100.00 Lot Dimension | | Existing Grade Contour |
| | Water and Electric Service Connection Points | | Easement Line |
| | Fire Hydrant | | Flow Arrows |
| | | | Indicates Designated Cultural Buffer Zones |

File Plan Lot No.: 5

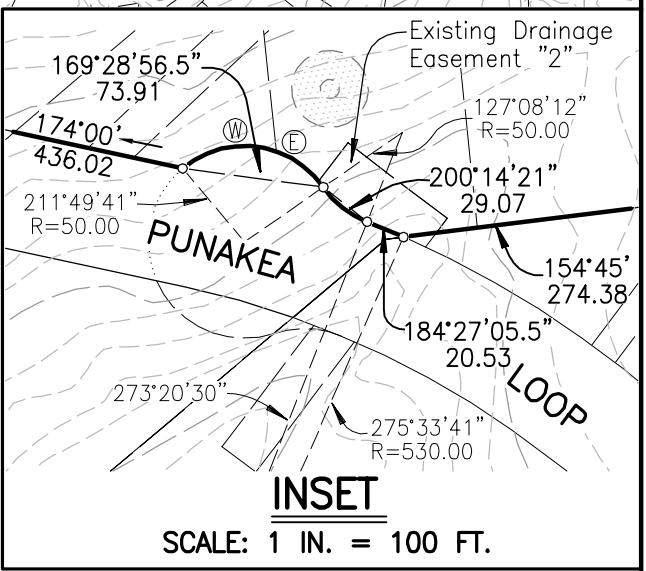
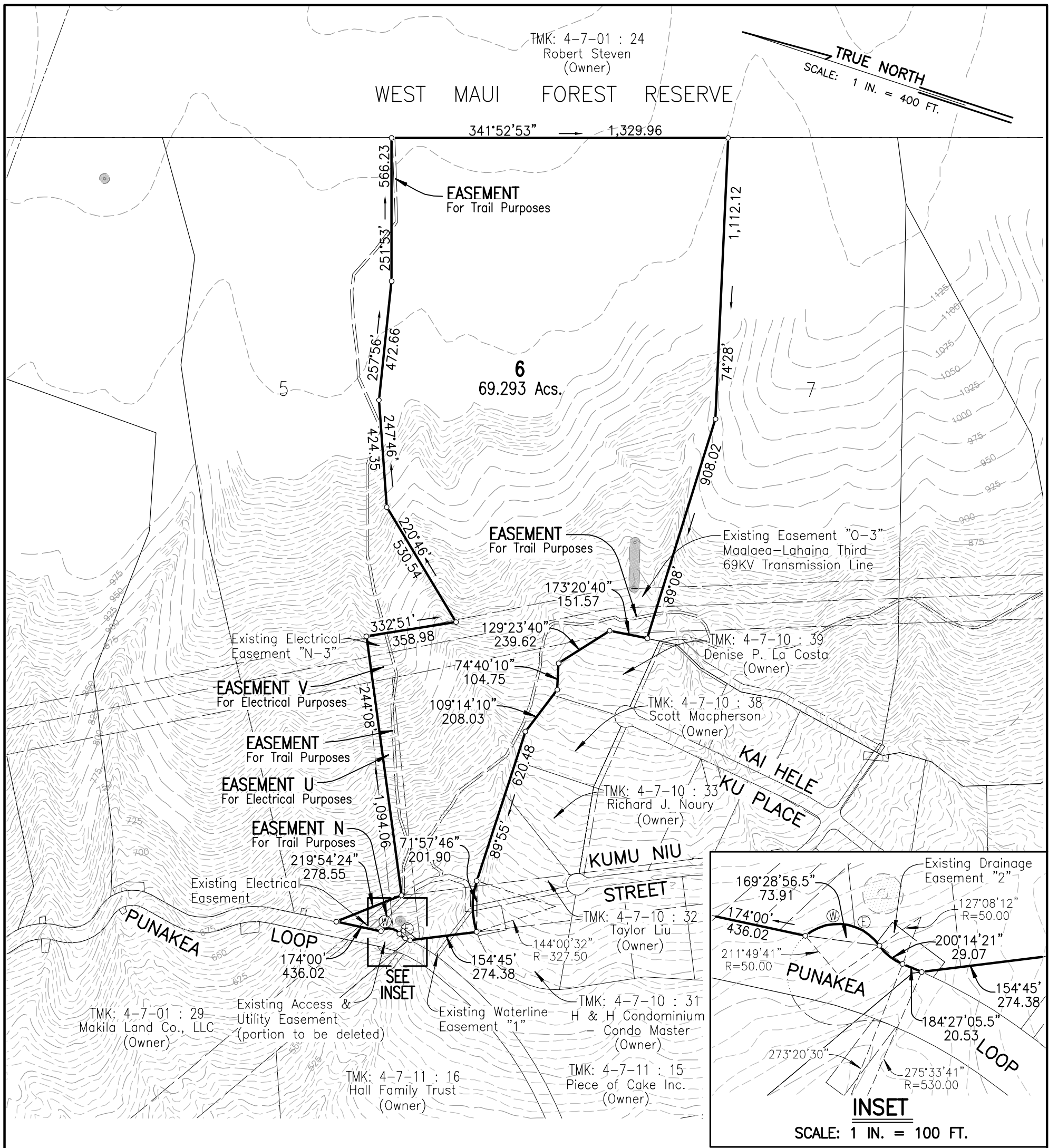
Tax Map Key:

Street Address and Name:

Lot Size (Acs.): 48.128 ACS.

Date: February 10, 2009

Additional Notes:



NOTE:

1. Makila Land Company reserves all rights to make such changes as are necessary in its sole judgement.
2. Lot dimensions shown on plan obtained from the County Use Only Makila Ridge Subdivision Final Plat Map and are subject to changes pending recordation of final plan map.
3. Elevation contours and utility stubout connections depicted on this exhibit are illustrative in nature and should not be relied upon unless confirmed by a topographic survey.

PLOT PLAN for Lot 6 MAKILA RIDGE SUBDIVISION

LEGEND:	
	Drainage Culverts
	Property Line
	Lot Dimension
	Water and Electric Service Connection Points
	Fire Hydrant
	Existing Grade Contour
	Easement Line
	Flow Arrows
	Indicates Designated Cultural Buffer Zones

File Plan Lot No.: 6
Tax Map Key:
Street Address and Name:
Lot Size (Ac.): 69.293 ACS.
Date: February 10, 2009
Additional Notes:

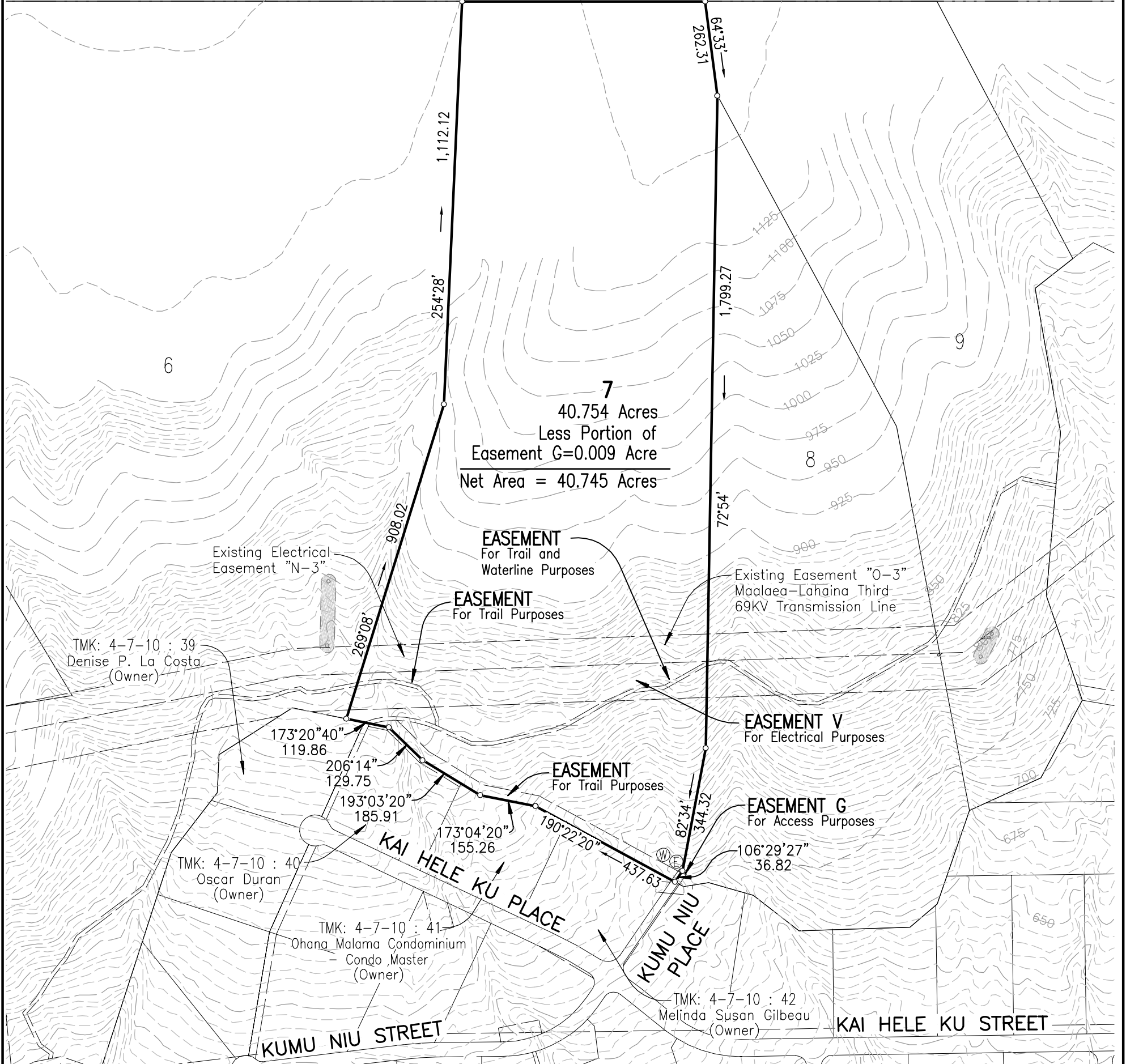
V:\Proj\data\03proj\03098\Draw2004\plot_plan\LOTS_01-06-00.dwg

TMK: 4-7-01 : 24
Robert Steven
(Owner)

WEST MAUI FOREST RESERVE

TRUE NORTH
SCALE: 1 IN. = 300 FT.

341°52'53" → 670.06



NOTE:

1. Makila Land Company reserves all rights to make such changes as are necessary in its sole judgement.
2. Lot dimensions shown on plan obtained from the County Use Only Makila Ridge Subdivision Final Plat Map and are subject to changes pending recodation of final plan map.
3. Elevation contours and utility stubout connections depicted on this exhibit are illustrative in nature and should not be relied upon unless confirmed by a topographic survey.

PLOT PLAN for Lot 7 MAKILA RIDGE SUBDIVISION

LEGEND:

Drainage Culverts	Property Line
100.00 Lot Dimension	Existing Grade Contour
Water and Electric Service Connection Points	Easement Line
Fire Hydrant	Flow Arrows
	Indicates Designated Cultural Buffer Zones

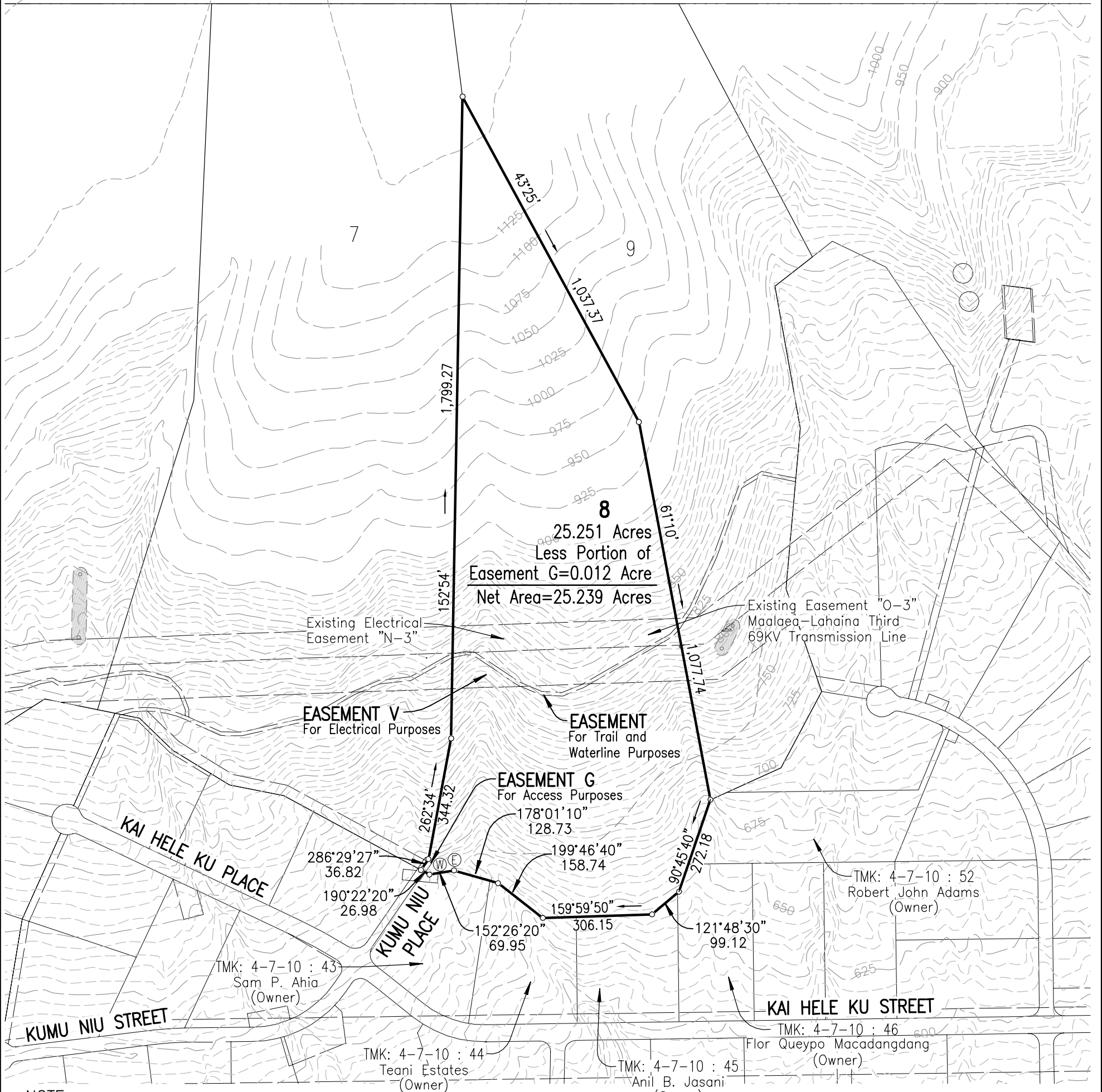
File Plan Lot No.: 7
Tax Map Key:
Street Address and Name:
Lot Size (Acs.): 40.754 ACS.
Date: February 10, 2009
Additional Notes:

V:\Proj\data\03proj\03098\Dwg2004\plot_plan\LOTS_07-11-00.dwg

TMK: 4-7-01 : 24
Robert Steven
(Owner)

WEST MAUI FOREST RESERVE

TRUE NORTH
SCALE: 1 IN. = 300 FT.



NOTE:

1. Makila Land Company reserves all rights to make such changes as are necessary in its sole judgement.
2. Lot dimensions shown on plan obtained from the County Use Only Makila Ridge Subdivision Final Plat Map and are subject to changes pending recordation of final plan map.
3. Elevation contours and utility stubout connections depicted on this exhibit are illustrative in nature and should not be relied upon unless confirmed by a topographic survey.

PLOT PLAN for Lot 8 MAKILA RIDGE SUBDIVISION

LEGEND:

- | | | | |
|--|--|--|--|
| | Drainage Culverts | | Property Line |
| | Lot Dimension | | Existing Grade Contour |
| | Water and Electric Service Connection Points | | Easement Line |
| | Fire Hydrant | | Flow Arrows |
| | | | Indicates Designated Cultural Buffer Zones |

File Plan Lot No.: 8

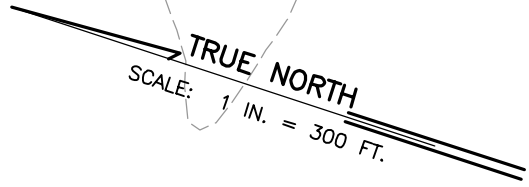
Tax Map Key:

Street Address and Name:

Lot Size (Acs.): 25.251 ACS.

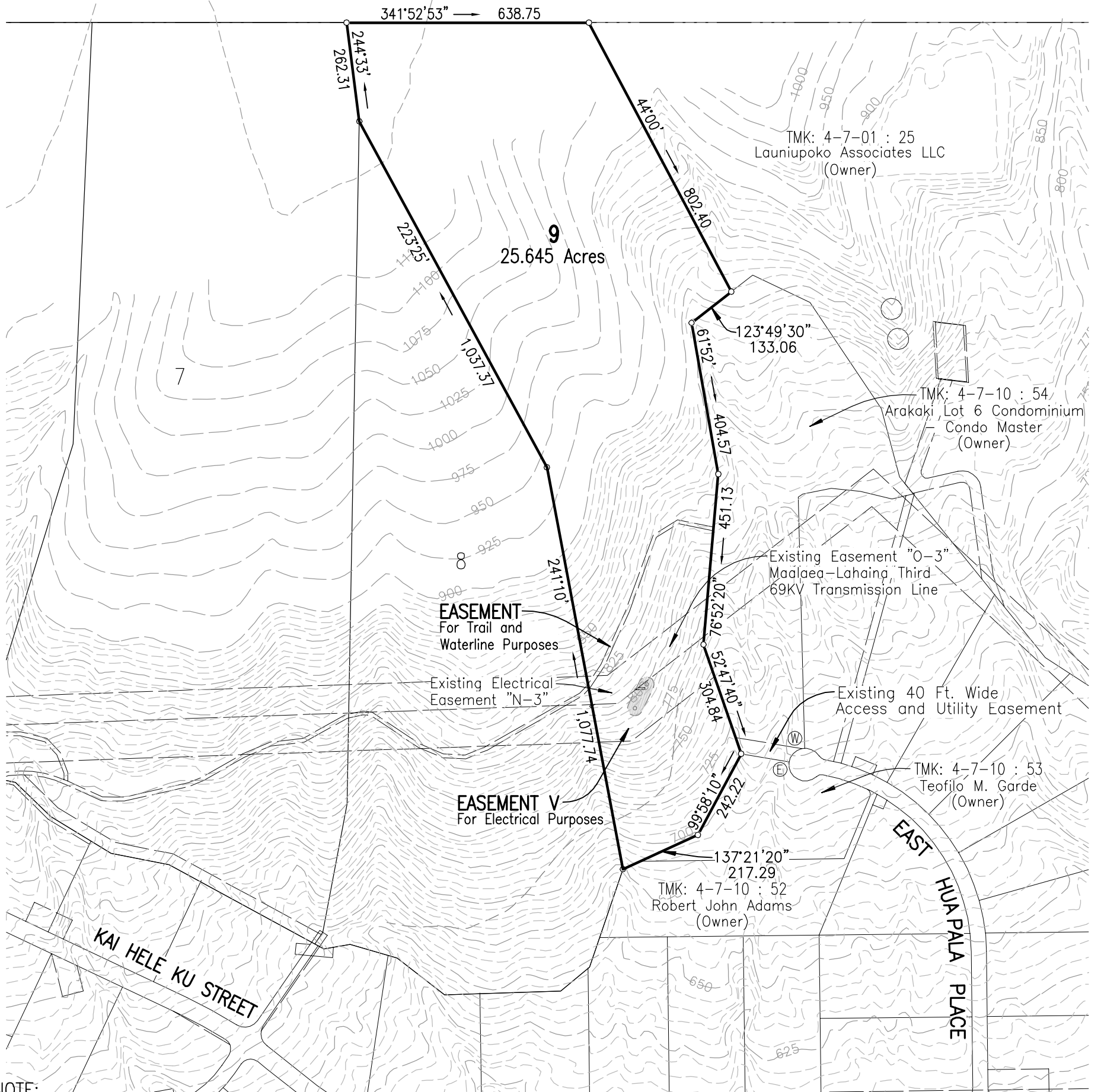
Date: February 10, 2009

Additional Notes:



TMK: 4-7-01 : 24
Robert Steven
(Owner)

WEST MAUI FOREST RESERVE



EASEMENT
For Trail and
Waterline Purposes

Existing Electrical
Easement "N-3"

EASEMENT V
For Electrical Purposes

Existing Easement "O-3"
Maalaea-Lahaina Third
69KV Transmission Line

Existing 40 Ft. Wide
Access and Utility Easement

TMK: 4-7-10 : 53
Teofilo M. Garde
(Owner)

TMK: 4-7-10 : 52
Robert John Adams
(Owner)

EAST HUPALA PLACE

KAI HELE KU STREET

NOTE:

1. Makila Land Company reserves all rights to make such changes as are necessary in its sole judgement.
2. Lot dimensions shown on plan obtained from the County Use Only Makila Ridge Subdivision Final Plat Map and are subject to changes pending recodation of final plan map.
3. Elevation contours and utility stubout connections depicted on this exhibit are illustrative in nature and should not be relied upon unless confirmed by a topographic survey.

PLOT PLAN for Lot 9 MAKILA RIDGE SUBDIVISION

LEGEND:

- | | |
|--|--|
| Drainage Culverts | Property Line |
| 100.00 Lot Dimension | Existing Grade Contour |
| Water and Electric Service Connection Points | Easement Line |
| Fire Hydrant | Flow Arrows |
| | Indicates Designated Cultural Buffer Zones |

File Plan Lot No.: 9

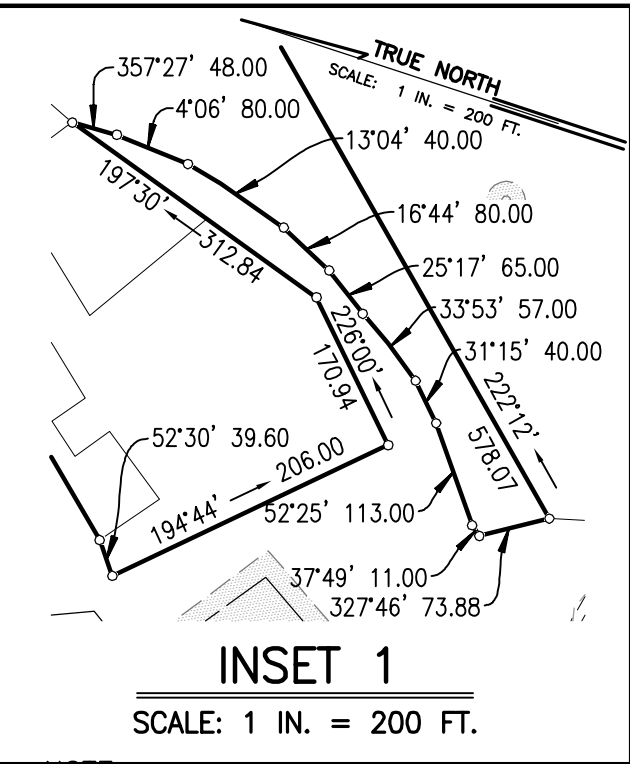
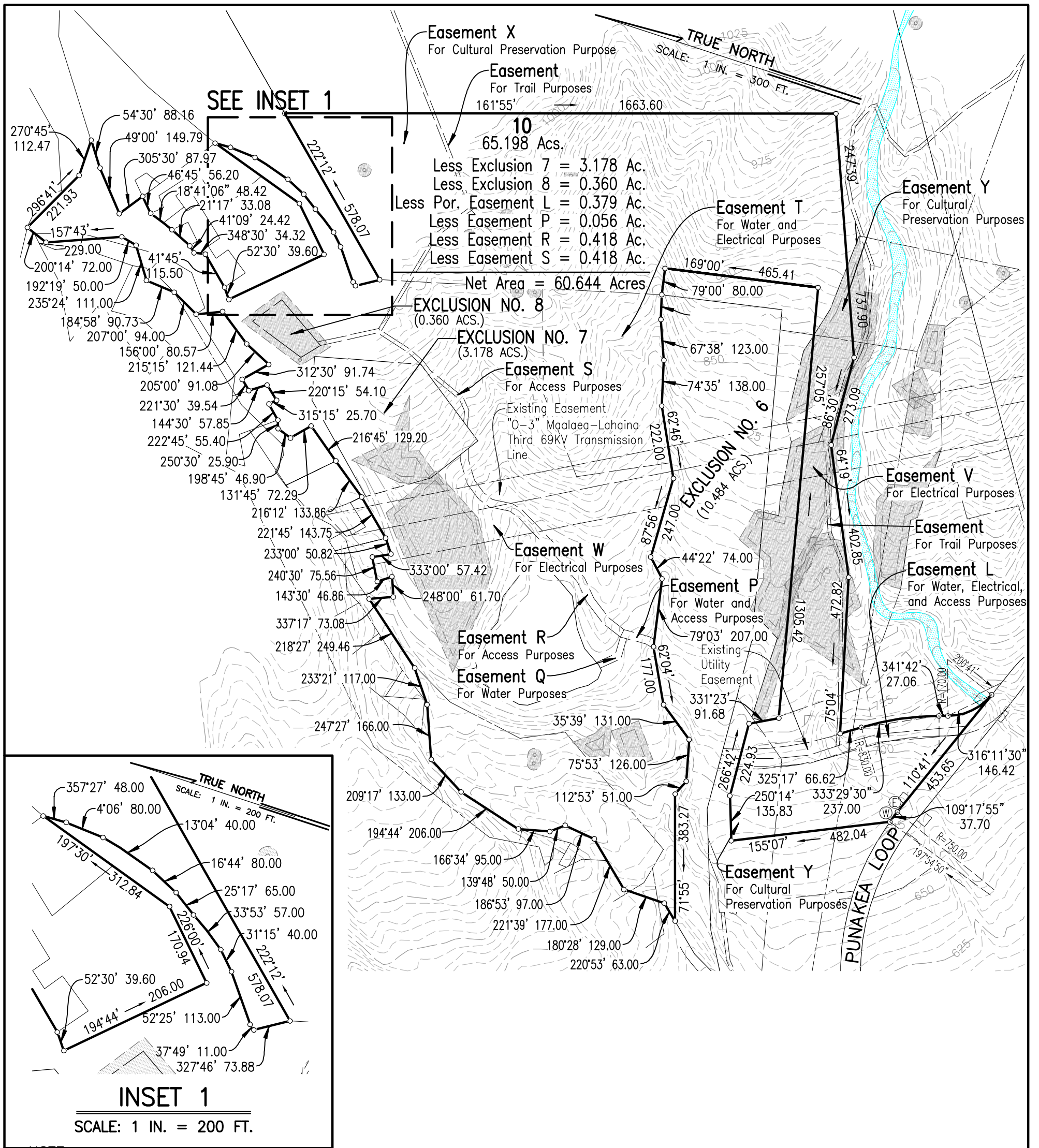
Tax Map Key:

Street Address and Name:

Lot Size (Acs.): 25.645 ACS.

Date: February 10, 2009

Additional Notes:



NOTE:

1. Makila Land Company reserves all rights to make such changes as are necessary in its sole judgement.
2. Lot dimensions shown on plan obtained from the County Use Only Makila Ridge Subdivision Final Plat Map and are subject to changes pending recordation of final plan map.
3. Elevation contours and utility stubout connections depicted on this exhibit are illustrative in nature and should not be relied upon unless confirmed by a topographic survey.

PLOT PLAN for Lot 10 MAKILA RIDGE SUBDIVISION

LEGEND:

- | | | | |
|--|--|--|--|
| | Drainage Culverts | | Property Line |
| | Lot Dimension | | Existing Grade Contour |
| | Water and Electric Service Connection Points | | Easement Line |
| | Fire Hydrant | | Flow Arrows |
| | | | Indicates Designated Cultural Buffer Zones |

File Plan Lot No.: 10

Tax Map Key:

Street Address and Name:

Lot Size (Ac.): 65.198 ACS.

Date: February 10, 2009

Additional Notes:

