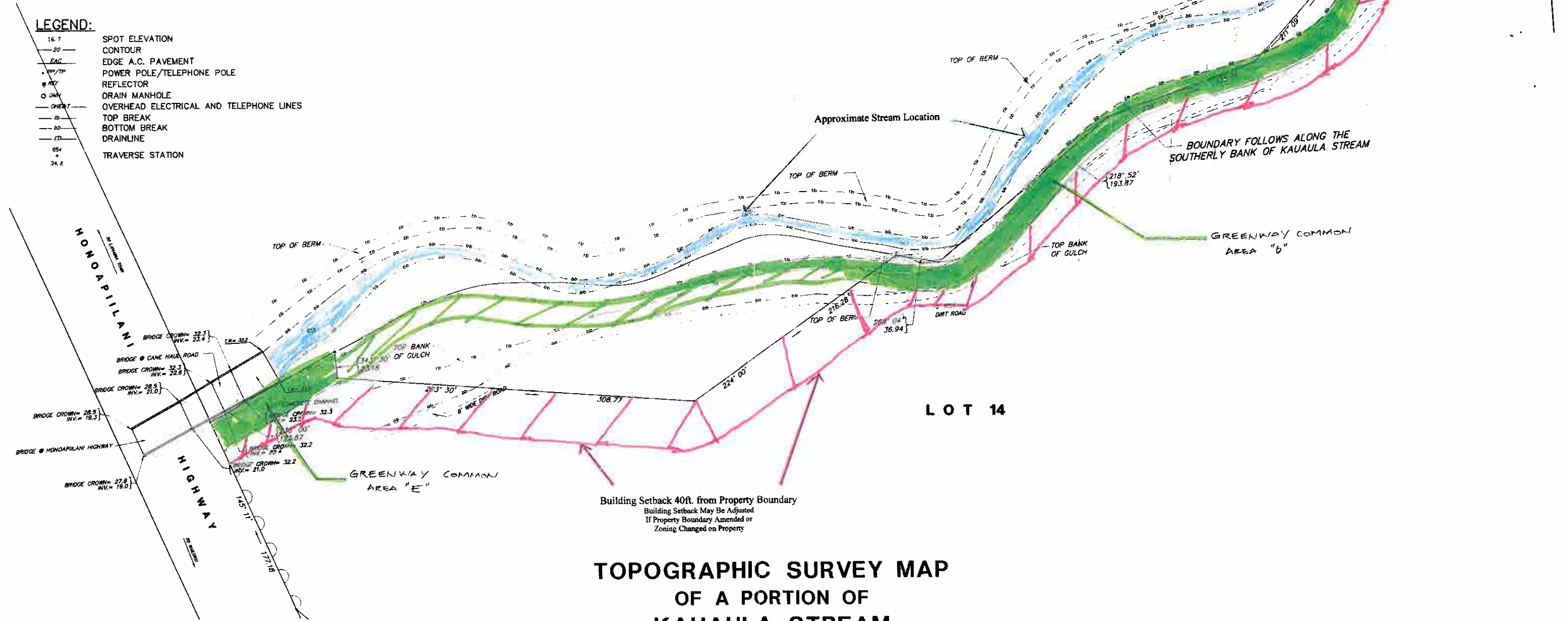


**KEY PLAN**

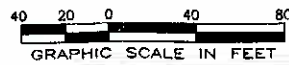
**LEGEND:**

- 16.7 SPOT ELEVATION
- 20 — CONTOUR
- EAC — EDGE A.C. PAVEMENT
- P/P/TP — POWER POLE/TELEPHONE POLE
- REF — REFLECTOR
- DMH — DRAIN MANHOLE
- OHE/TEL — OVERHEAD ELECTRICAL AND TELEPHONE LINES
- TB — TOP BREAK
- BB — BOTTOM BREAK
- DL — DRAINLINE
- TS — TRAVERSE STATION



**TOPOGRAPHIC SURVEY MAP  
OF A PORTION OF  
KAUAULA STREAM**

**LAND SITUATED ON THE EAST SIDE OF HONOAPIILANI HIGHWAY  
(F.A.P. No. F-030-1(1))  
AT PAHOA, POLANUI, LAHAINA, MAUI, HAWAII**



**R. T. TANAKA ENGINEERS, INC.**  
LAND SURVEYORS - CIVIL & STRUCTURAL ENGINEERS

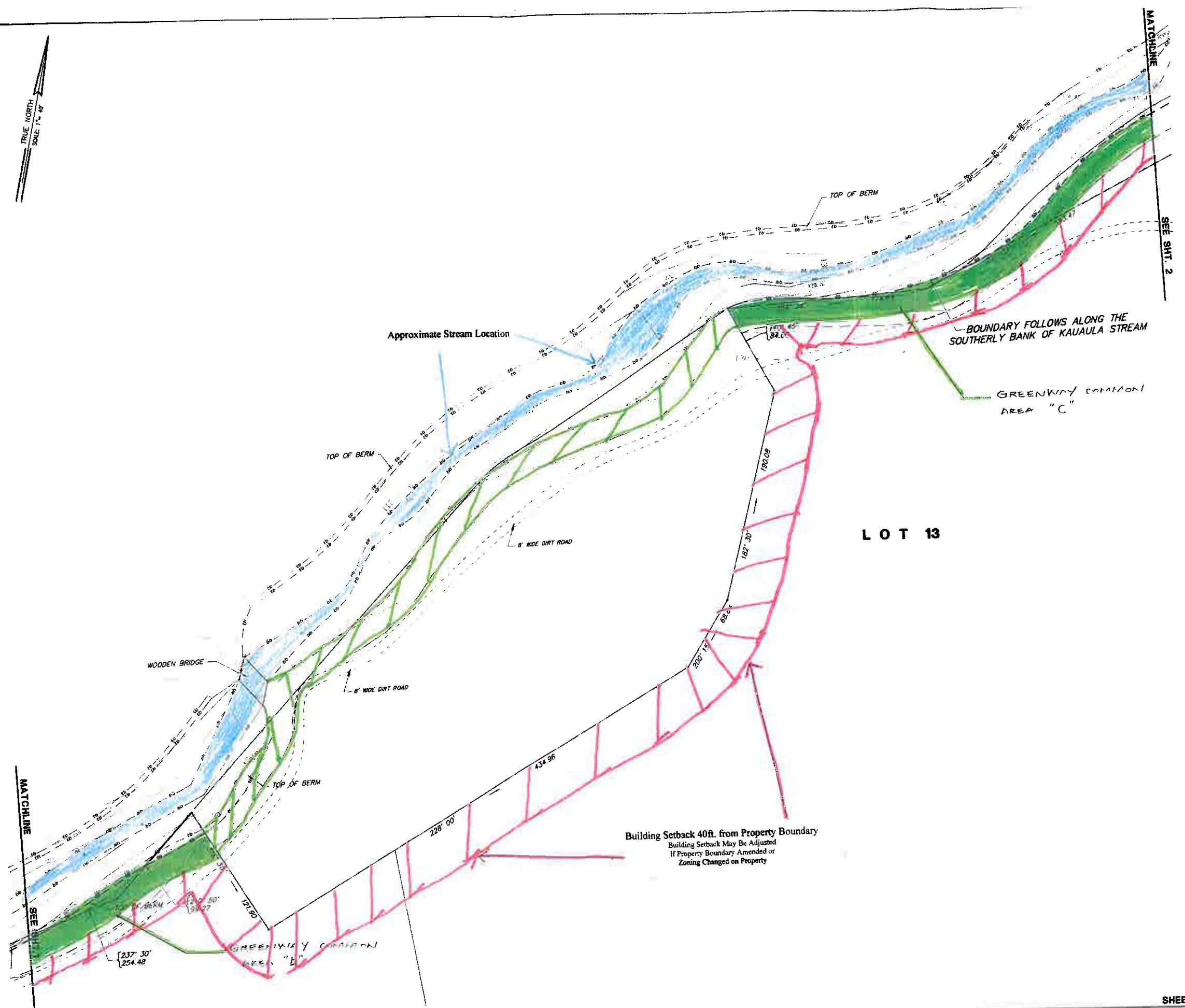
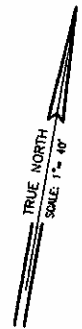
**NOTES FOR TOPOGRAPHIC FEATURES:**

1. ELEVATION DATUM = MEAN SEA LEVEL.
2. ALL VISIBLE UTILITY STRUCTURES HAVE BEEN LOCATED IN THE FIELD, HOWEVER, CONNECTION OF UNDERGROUND UTILITY LINES AS SHOWN ARE UNVERIFIED AND COMPILED FROM EXISTING DATA. UNDERGROUND UTILITIES SHOWN HEREON ARE FOR INFORMATION ONLY, HAVING BEEN OBTAINED FROM THE BEST AVAILABLE SOURCES, BUT FROM OTHERS NOT CONNECTED WITH THIS COMPANY. THEREFORE, NO GUARANTEE IS MADE ON THE ACCURACY OR COMPLETENESS OF SAID INFORMATION.

Tax Map Key: (2)4-7-02: 04(PORION)  
(2)4-7-03: 01(PORION)

871 KOLU STREET, SUITE 201  
WAILUKU, MAUI, HAWAII 96793

PRINTED  
DEC 11 2002  
R.T. TANAKA ENGINEERS, INC.

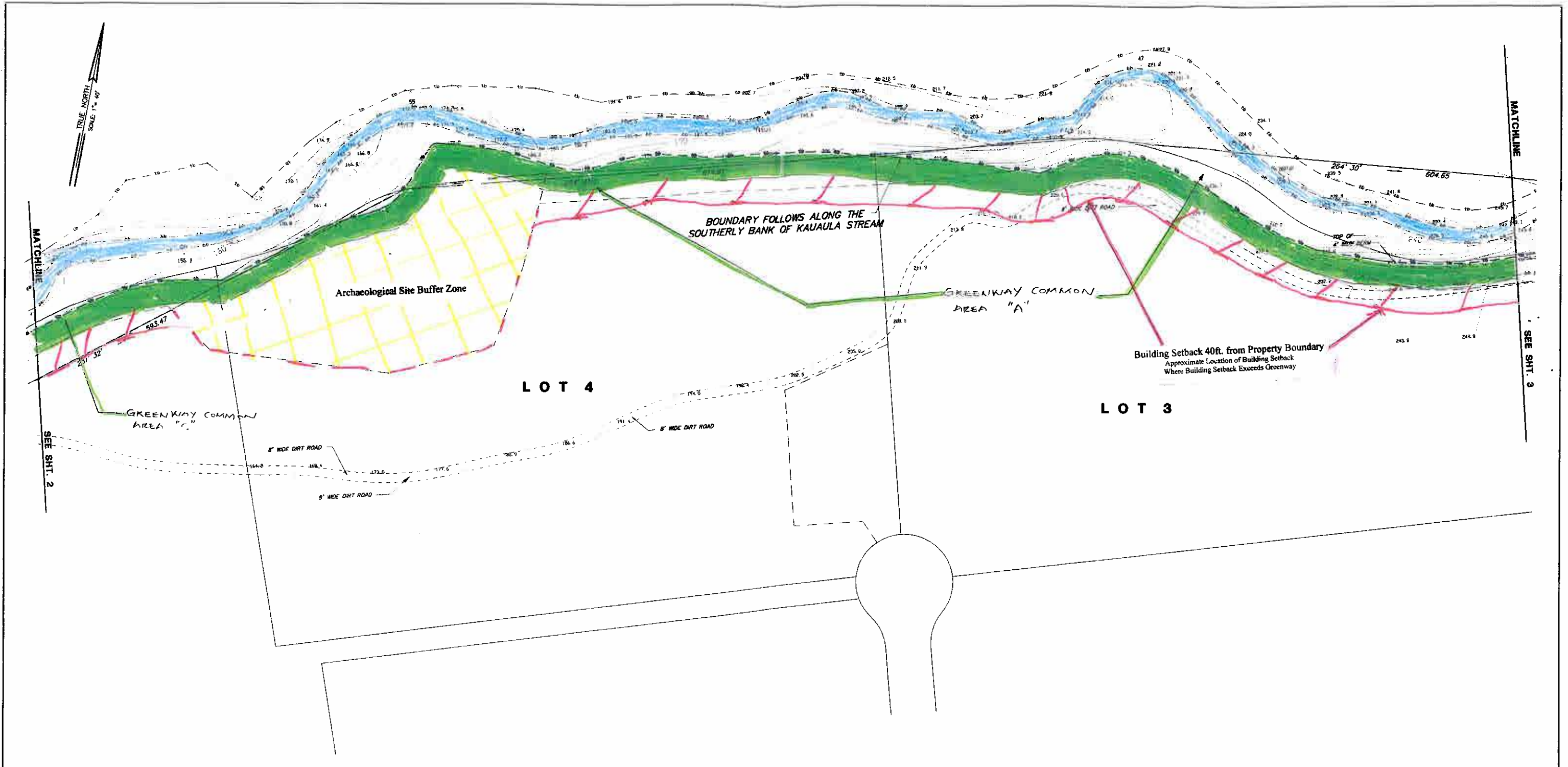


Tax Map Key: (2) 4-7-02: 04(PORION)  
(2) 4-7-03: 01(PORION)  
871 KOLU STREET, SUITE 201  
WAILUKU, MAUI, HAWAII 96793

**R. T. TANAKA ENGINEERS, INC.**  
LAND SURVEYORS - CIVIL & STRUCTURAL ENGINEERS

PRINTED  
DEC 11 2002  
R.T. TANAKA ENGINEERS, INC.

SHEET 2 of 6 JUNE 27, 2001  
JOB NO. 99-73



TRUE NORTH  
SCALE 1" = 40'

MATCHLINE

MATCHLINE

SEE SHT. 2

SEE SHT. 3

Archaeological Site Buffer Zone

BOUNDARY FOLLOWS ALONG THE  
SOUTHERLY BANK OF KAUAULA STREAM

GREENWAY COMMON  
AREA "A"

Building Setback 40ft. from Property Boundary  
Approximate Location of Building Setback  
Where Building Setback Exceeds Greenway

GREENWAY COMMON  
AREA "C"

LOT 4

LOT 3

8' WIDE DIRT ROAD

8' WIDE DIRT ROAD

8' WIDE DIRT ROAD

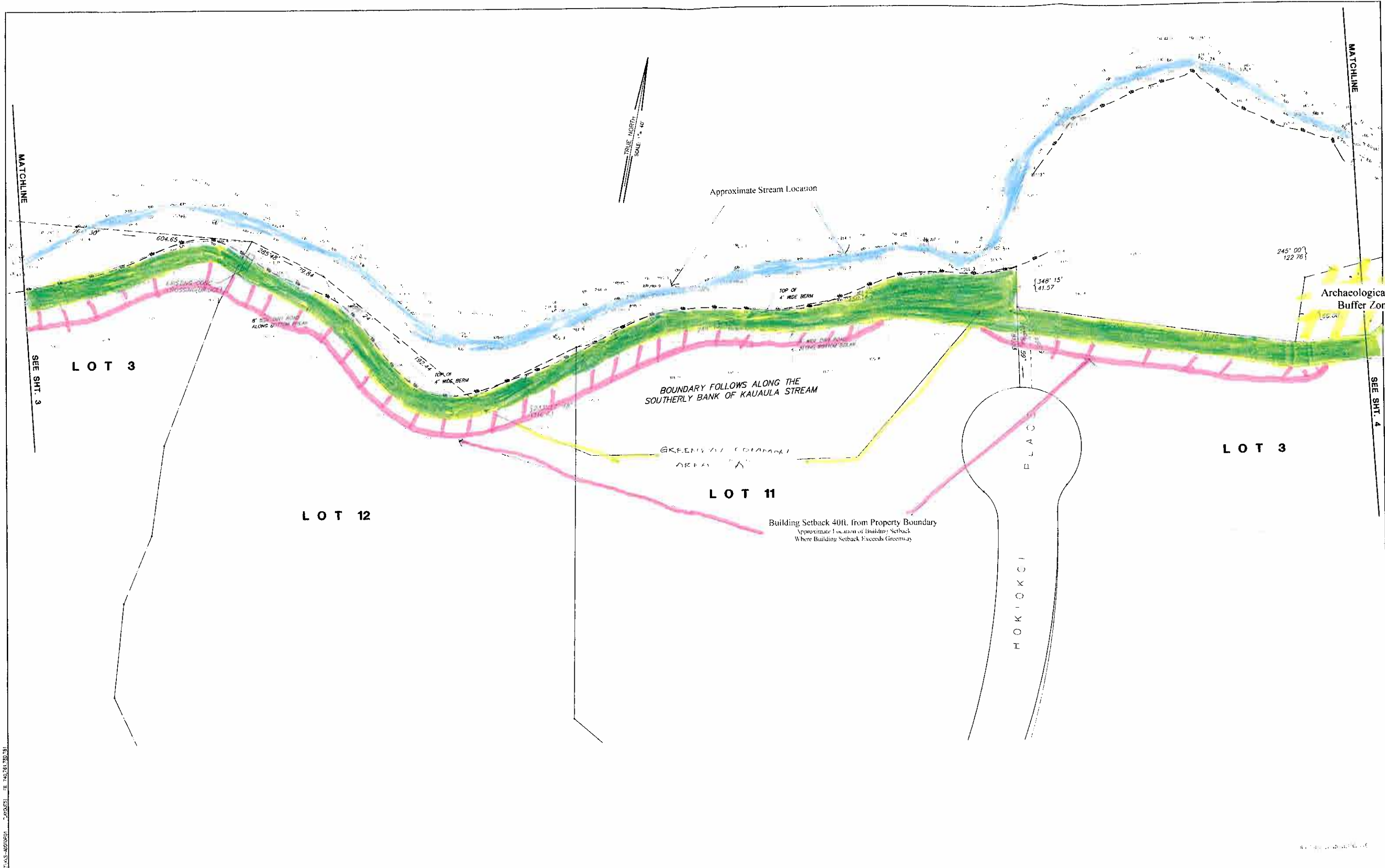
Tax Map Key: (2) 4-7-02: 04(PORION)  
(2) 4-7-03: 01(PORION)

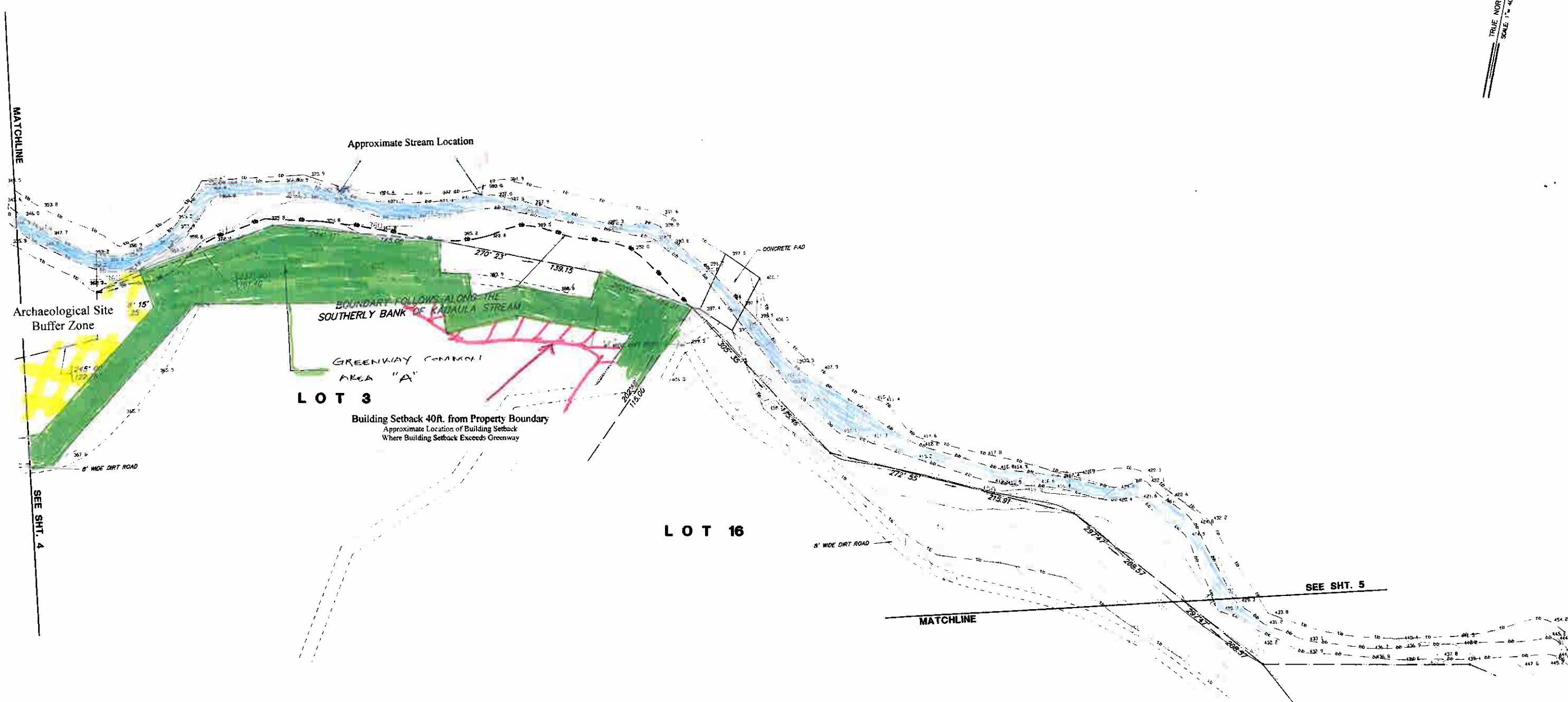
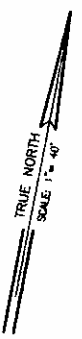
871 KOLU STREET, SUITE 201  
WAILUKU, MAUI, HAWAII 96793

**R. T. TANAKA ENGINEERS, INC.**  
LAND SURVEYORS - CIVIL & STRUCTURAL ENGINEERS

PRINTED  
DEC 11 2002  
R.T. TANAKA ENGINEERS, INC.

SHEET 3 of 6 JUNE 27, 2001  
JOB NO. 99-73





Tax Map Key: (2) 4-7-02: 04(PORION)  
(2) 4-7-03: 01(PORION)  
871 KOLU STREET, SUITE 201  
WAILUKU, MAUI, HAWAII 96793

**R. T. TANAKA ENGINEERS, INC.**  
LAND SURVEYORS - CIVIL & STRUCTURAL ENGINEERS

PRINTED  
DEC 11 2002  
R. T. TANAKA ENGINEERS, INC.  
SHEET 5 of 6 JUNE 27, 2001  
JOB NO. 99-73