

**NOTE:**

1. Makila Land Company reserves all rights to make such changes as are necessary in its sole judgement.
2. Lot dimensions shown on plan obtained from the unrecorded Makila Plantation Phase 3 File Plan (File Plan Recordation Pending).
3. Elevation contours and utility stubout connections depicted on this exhibit are illustrative in nature and should not be relied upon unless confirmed by a topographic survey.
4. Existing drainageways from detention basins and minor gulches are shown with Flow Arrows. These drainageways may not be altered or blocked unless grading is designed and approved by a licensed engineer. All additional runoff from buildings, driveways, and other hardscapes must be retained on-site.

## PLOT PLAN for Lot 1 MAKILA PLANTATION PHASE III

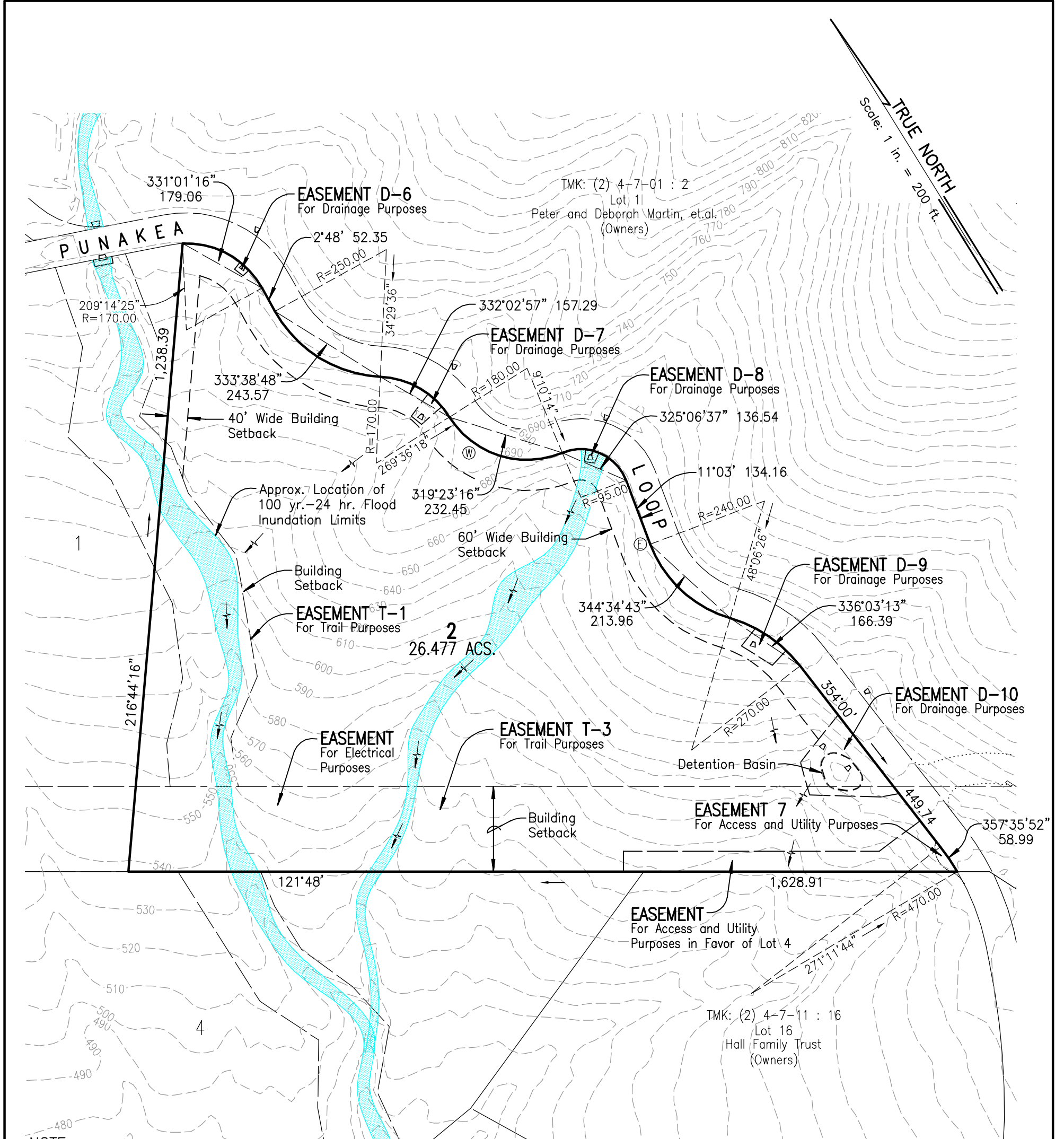
**LEGEND:**

- |  |  |  |                        |
|--|--|--|------------------------|
|  | Drainage Culverts                            |  | Property Line          |
|  | 100.00 Lot Dimension                         |  | Existing Grade Contour |
|  | Water and Electric Service Connection Points |  | Easement Line          |
|  | Fire Hydrant                                 |  | Building Setback Line  |
|  |  |  | Flow Arrows            |

File Plan Lot No.: 1  
 Tax Map Key:  
 Street Address and Name:  
 Lot Size (Acs.): 27.341  
 Date: January 9, 2009  
 Additional Notes:



SCALE: 1 IN. = 200 FT.



TRUE NORTH  
Scale: 1 in. = 200 ft.

**NOTE:**

1. Makila Land Company reserves all rights to make such changes as are necessary in its sole judgement.
2. Lot dimensions shown on plan obtained from the unrecorded Makila Plantation Phase 3 File Plan (File Plan Recordation Pending).
3. Elevation contours and utility stubout connections depicted on this exhibit are illustrative in nature and should not be relied upon unless confirmed by a topographic survey.
4. Existing drainageways from detention basins and minor gulches are shown with Flow Arrows. These drainageways may not be altered or blocked unless grading is designed and approved by a licensed engineer. All additional runoff from buildings, driveways, and other hardscapes must be retained on-site.

## PLOT PLAN for Lot 2 MAKILA PLANTATION PHASE III

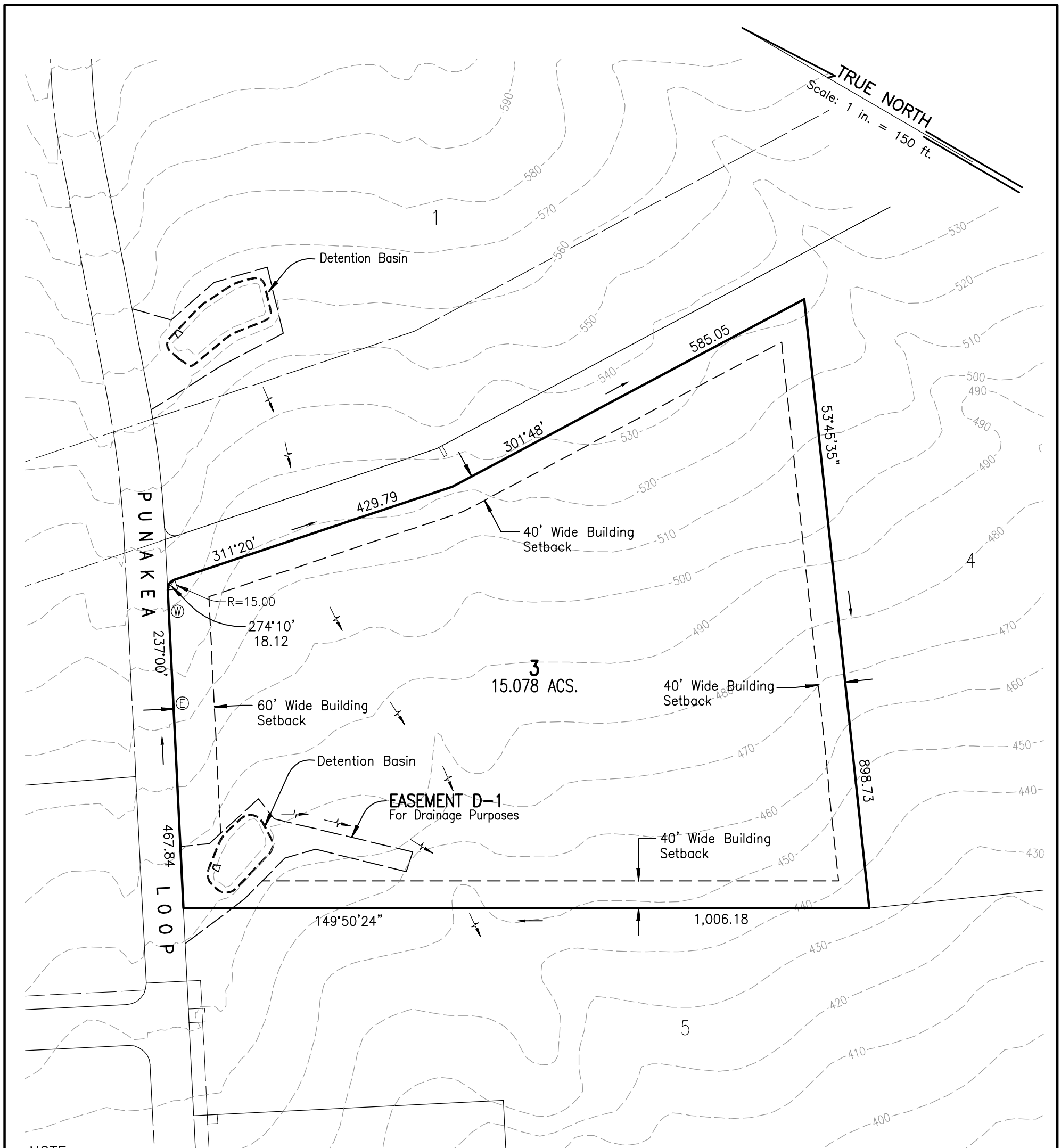
**LEGEND:**

- |  |  |  |                        |
|--|--|--|------------------------|
|  | Drainage Culverts                            |  | Property Line          |
|  | Lot Dimension                                |  | Existing Grade Contour |
|  | Water and Electric Service Connection Points |  | Easement Line          |
|  | Fire Hydrant                                 |  | Building Setback Line  |
|  |  |  | Flow Arrows            |

File Plan Lot No.: 2
Tax Map Key:
Street Address and Name:
Lot Size (Ac.): 26.477
Date: January 9, 2009
Additional Notes: The Existing Trail Outside of Easements T-1 & T-3 is Relocatable by Owner at Owner's Expense



SCALE: 1 IN. = 200 FT.



**NOTE:**

1. Makila Land Company reserves all rights to make such changes as are necessary in its sole judgement.
2. Lot dimensions shown on plan obtained from the unrecorded Makila Plantation Phase 3 File Plan (File Plan Recordation Pending).
3. Elevation contours and utility stubout connections depicted on this exhibit are illustrative in nature and should not be relied upon unless confirmed by a topographic survey.
4. Existing drainageways from detention basins and minor gulches are shown with Flow Arrows. These drainageways may not be altered or blocked unless grading is designed and approved by a licensed engineer. All additional runoff from buildings, driveways, and other hardscapes must be retained on-site.

## PLOT PLAN for Lot 3 MAKILA PLANTATION PHASE III

**LEGEND:**

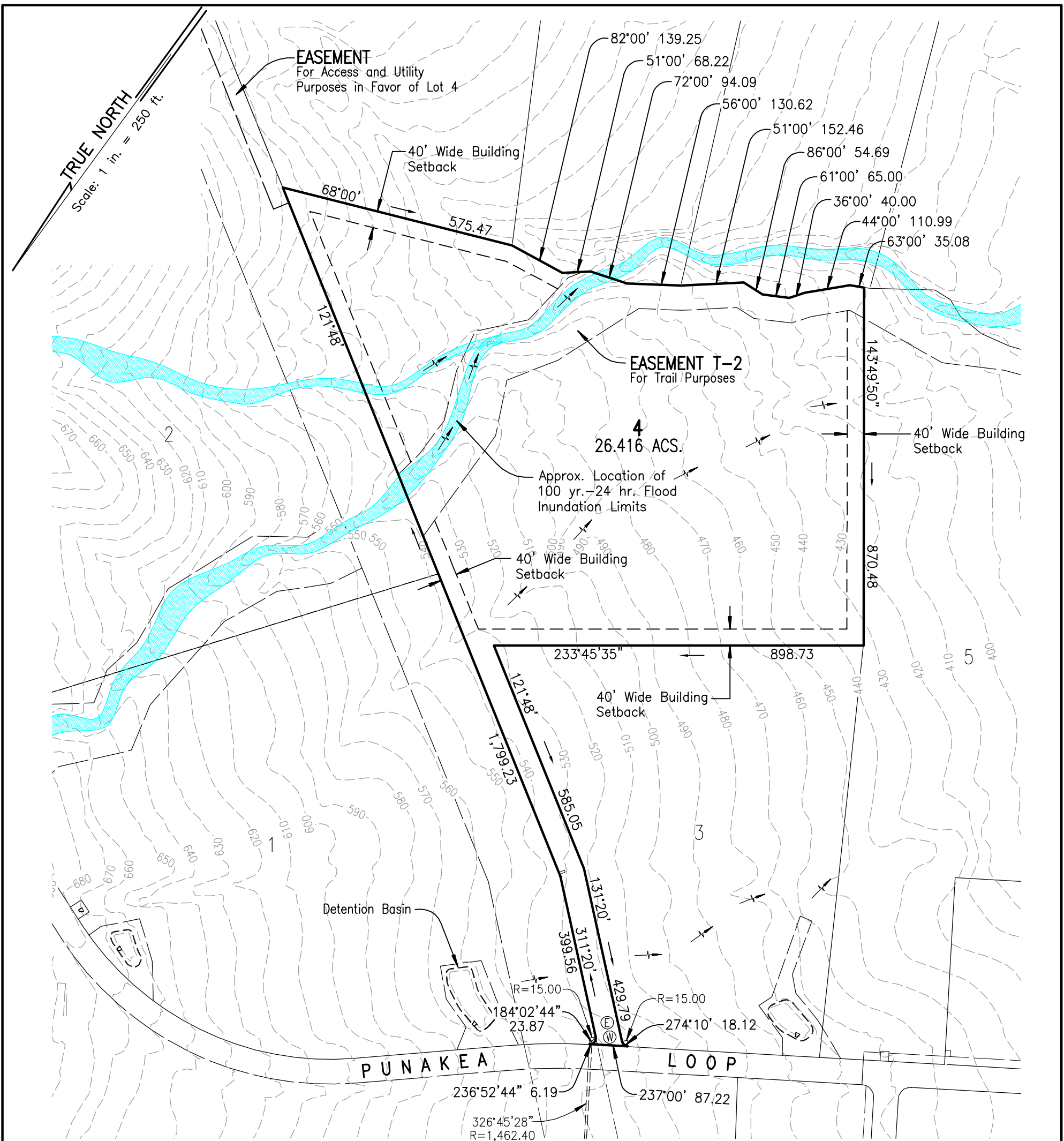
- |        |  |  |                        |
|--------|--|--|------------------------|
|        | Drainage Culverts                            |  | Property Line          |
| 100.00 | Lot Dimension                                |  | Existing Grade Contour |
|        | Water and Electric Service Connection Points |  | Easement Line          |
|        | Fire Hydrant                                 |  | Building Setback Line  |
|        |  |  | Flow Arrows            |

File Plan Lot No.: 3  
 Tax Map Key:  
 Street Address and Name:  
 Lot Size (Acs.): 15.078  
 Date: January 9, 2009  
 Additional Notes:



SCALE: 1 IN. = 150 FT.





**NOTE:**

1. Makila Land Company reserves all rights to make such changes as are necessary in its sole judgement.
2. Lot dimensions shown on plan obtained from the unrecorded Makila Plantation Phase 3 File Plan (File Plan Recordation Pending).
3. Elevation contours and utility stubout connections depicted on this exhibit are illustrative in nature and should not be relied upon unless confirmed by a topographic survey.
4. Existing drainageways from detention basins and minor gulches are shown with Flow Arrows. These drainageways may not be altered or blocked unless grading is designed and approved by a licensed engineer. All additional runoff from buildings, driveways, and other hardscapes must be retained on-site.

## PLOT PLAN for Lot 4 MAKILA PLANTATION PHASE III

**LEGEND:**

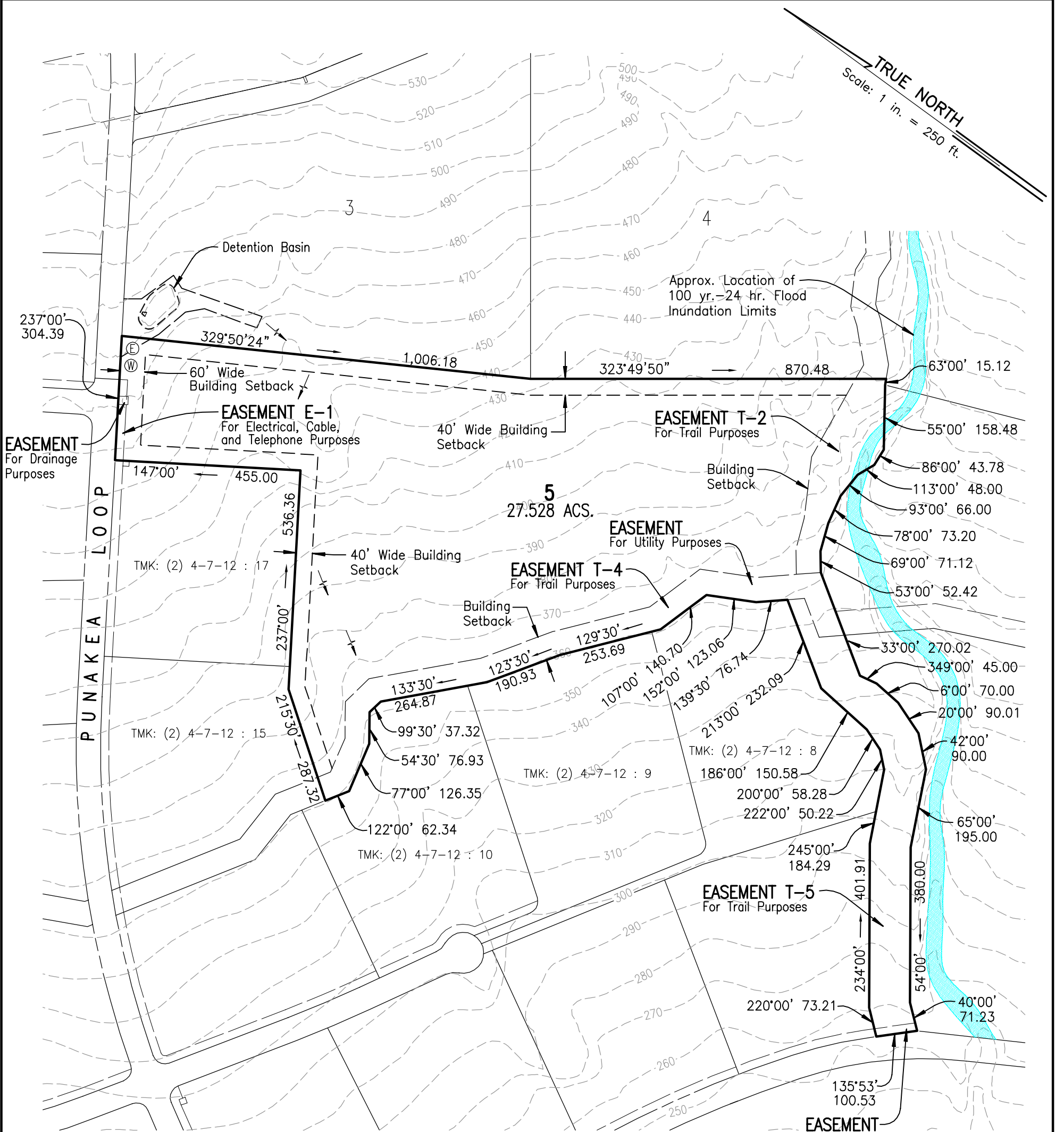
- |        |  |  |                        |
|--------|--|--|------------------------|
|        | Drainage Culverts                            |  | Property Line          |
| 100.00 | Lot Dimension                                |  | Existing Grade Contour |
|        | Water and Electric Service Connection Points |  | Easement Line          |
|        | Fire Hydrant                                 |  | Building Setback Line  |
|        |  |  | Flow Arrows            |

File Plan Lot No.: 4  
 Tax Map Key:  
 Street Address and Name:  
 Lot Size (Acs.): 26.416  
 Date: January 9, 2009  
 Additional Notes:



SCALE: 1 IN. = 250 FT.

TRUE NORTH  
Scale: 1 in. = 250 ft.



## PLOT PLAN for Lot 5 MAKILA PLANTATION PHASE III

**LEGEND:**

- |        |  |  |                        |
|--------|--|--|------------------------|
|        | Drainage Culverts                            |  | Property Line          |
| 100.00 | Lot Dimension                                |  | Existing Grade Contour |
|        | Water and Electric Service Connection Points |  | Easement Line          |
|        | Fire Hydrant                                 |  | Building Setback Line  |
|        |  |  | Flow Arrows            |

File Plan Lot No.: 5  
Tax Map Key:  
Street Address and Name:  
Lot Size (Ac.): 27.528  
Date: January 9, 2009  
Additional Notes:



SCALE: 1 IN. = 250 FT.