



FABMAC HOMES
AFFORDABLE BUILDING SOLUTIONS

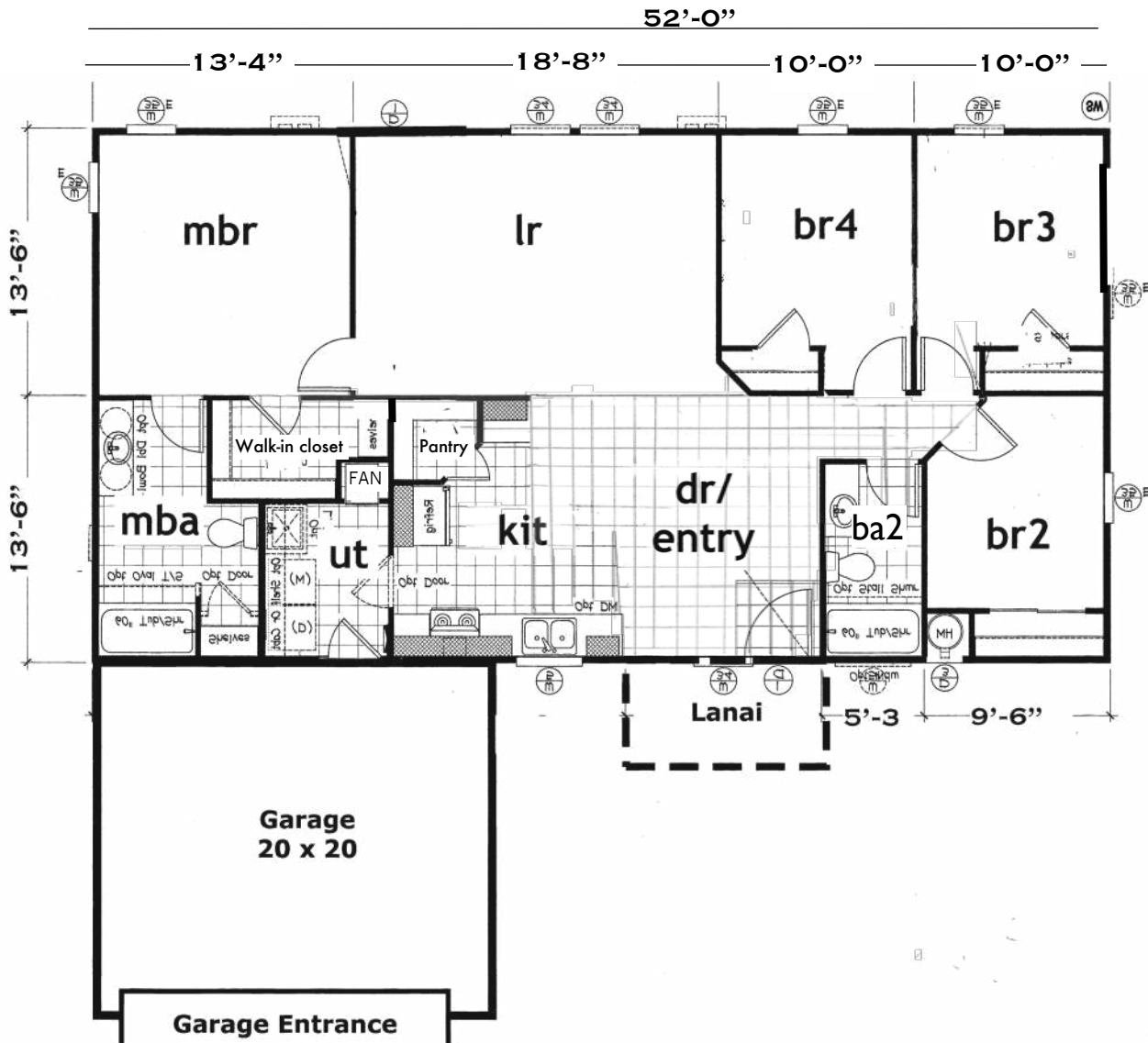
The Kukui - Lots 5, 43 & 46 Rendering and Floor Plan

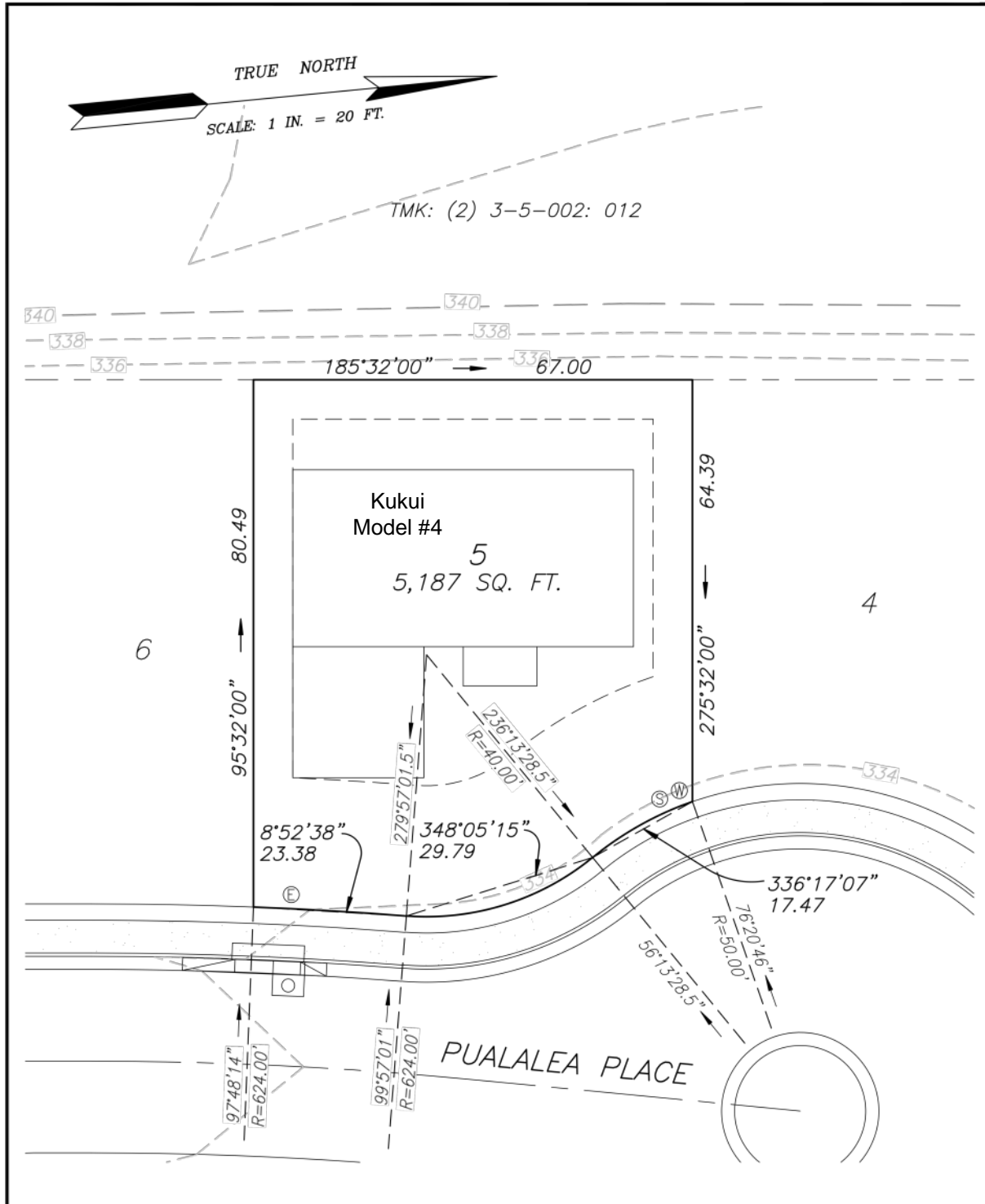


The Kukui - Model #4

1-story house,
with attached garage
and front lanai
4 bedroom, 2 bath,
27' x 52'

Living Area	1,404 SF
Garage	400 SF
Covered Lanai	<u>60 SF</u>
Total	1,864 SF

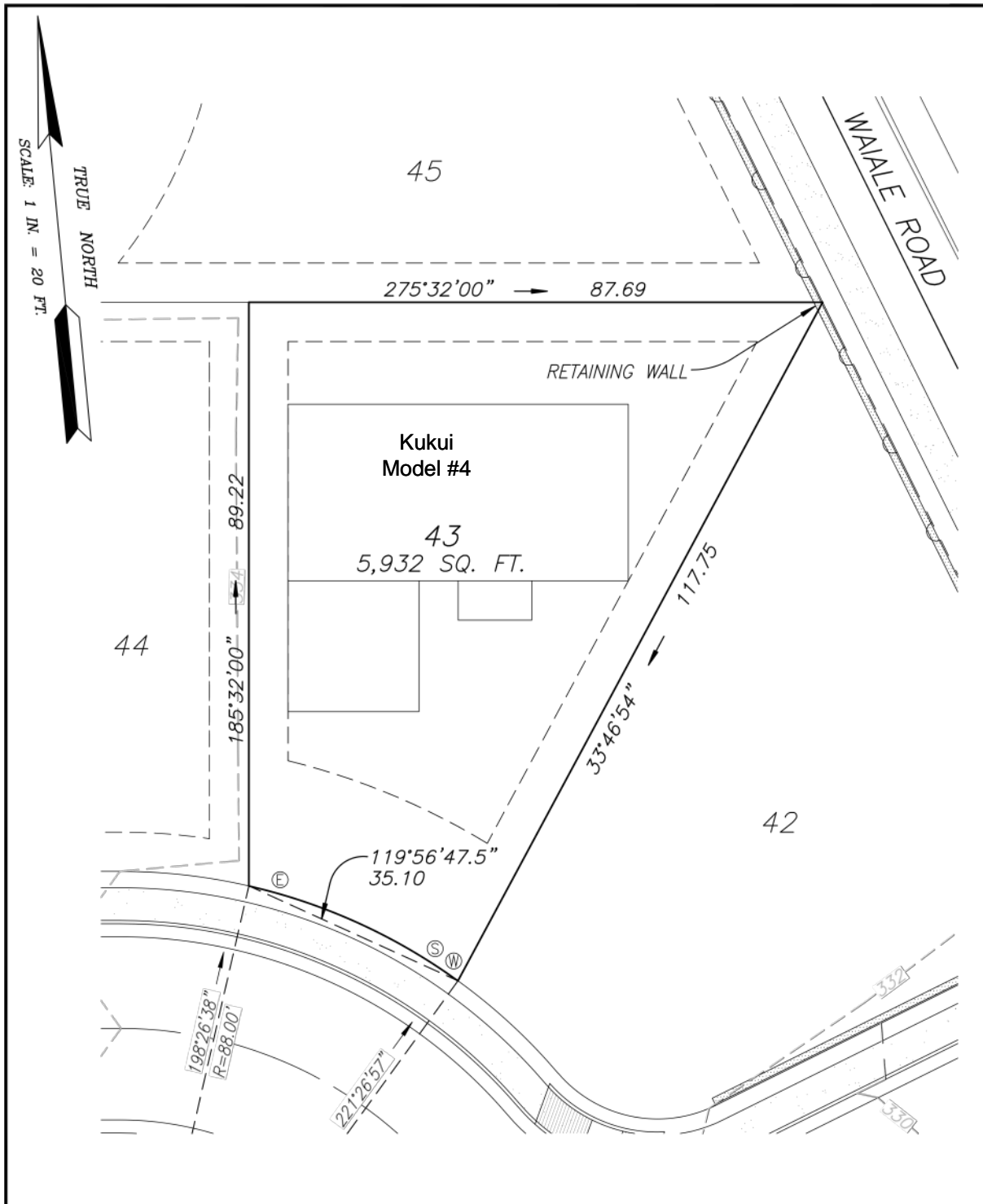




NOTES:

1. Lot buyer shall verify all topography, soil conditions, drainage, fill conditions, utilities, easements and street trees in the field. Plot plan is informational only and does not constitute any commitment, representation or warranty with respect to the foregoing items. The lot dimensions and easements shown are preliminary only and are subject to change until the approval of the Final Subdivision Plat, see recorded Final Subdivision Plat for Final Lot Dimensions. This plan should be printed on 8 1/2" x 14" paper.
2. Use and development of the Lot are subject in all respects to compliance with the uses allowed under the Waiale Elua Subdivision Association Covenants, Conditions and Restrictions, including all revisions and amendments thereof.

LOT1-5&43-46.dwg



NOTES:

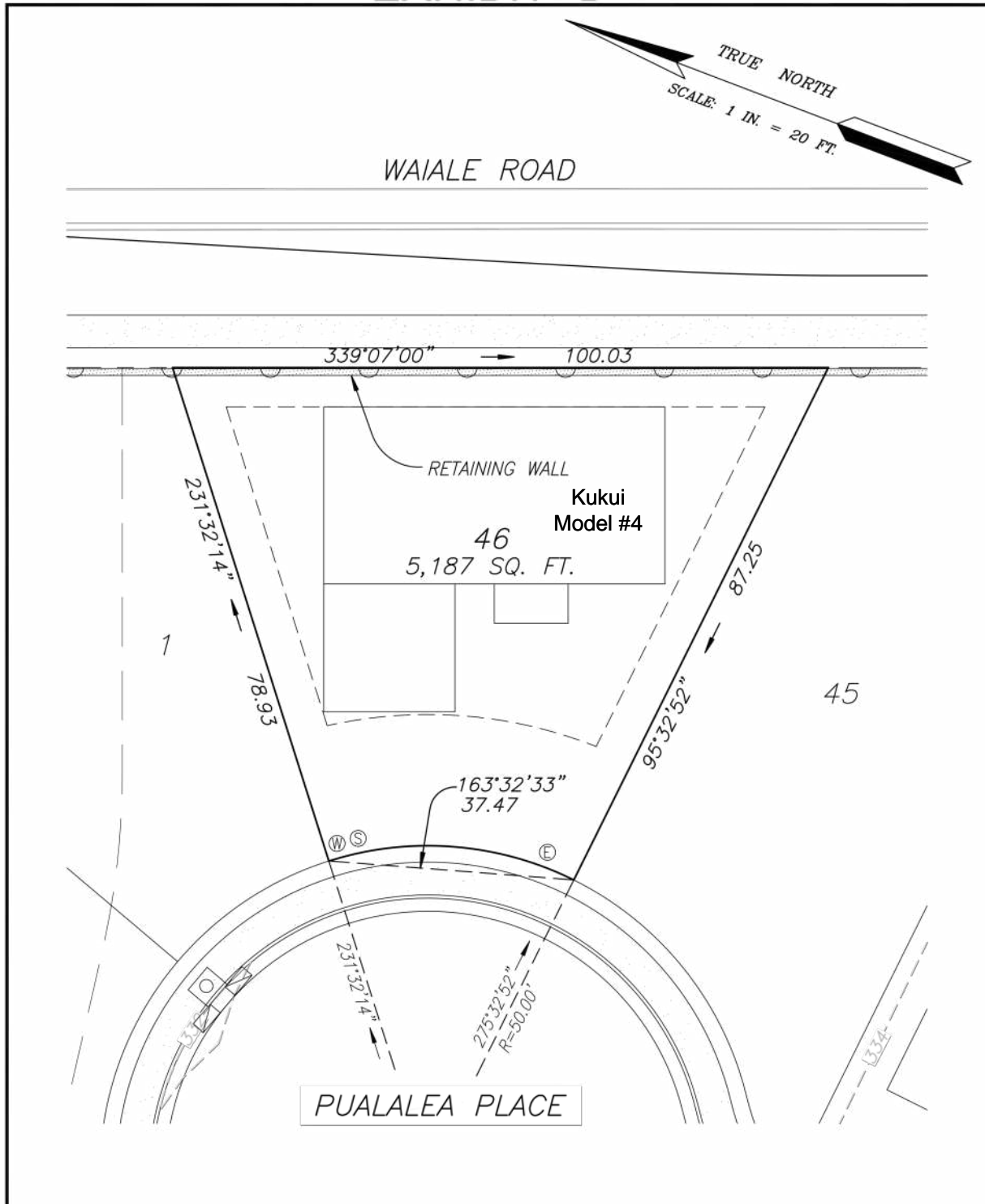
1. Lot buyer shall verify all topography, soil conditions, drainage, fill conditions, utilities, easements and street trees in the field. Plot plan is informational only and does not constitute any commitment, representation or warranty with respect to the foregoing items. The lot dimensions and easements shown are preliminary only and are subject to change until the approval of the Final Subdivision Plat, see recorded Final Subdivision Plat for Final Lot Dimensions. This plan should be printed on 8 1/2" x 14" paper.
2. Use and development of the Lot are subject in all respects to compliance with the uses allowed under the Waiale Elua Subdivision Association Covenants, Conditions and Restrictions, including all revisions and amendments thereof.

\\LOT1-5&43-46.dwg



FABMAC HOMES
AFFORDABLE BUILDING SOLUTIONS

The Kukui - Lot 46 Plot Plan



NOTES:

1. Lot buyer shall verify all topography, soil conditions, drainage, fill conditions, utilities, easements and street trees in the field. Plot plan is informational only and does not constitute any commitment, representation or warranty with respect to the foregoing items. The lot dimensions and easements shown are preliminary only and are subject to change until the approval of the Final Subdivision Plat, see recorded Final Subdivision Plat for Final Lot Dimensions. This plan should be printed on 8 1/2" x 14" paper.
2. Use and development of the Lot are subject in all respects to compliance with the uses allowed under the Waiale Elua Subdivision Association Covenants, Conditions and Restrictions, including all revisions and amendments thereof.

LOT1-5&43-46.dwg

PLOT PLAN for Lot 46

WAIALE ELUA SUBDIVISION